

Purry Burry Boardwalk

Purry Burry, New South Wales – Under the care of the Wollongong City Council, Purry Burry is a spot frequented by locals and visitors alike. A popular spot for fishing, cycling and a variety of other nature activities, the city council decided that the existing timber boardwalk was in poor condition and needed to be replaced.

Treadwell was engaged to supply the FRP grating, support profiles as well as the ancillary items for the new boardwalk.

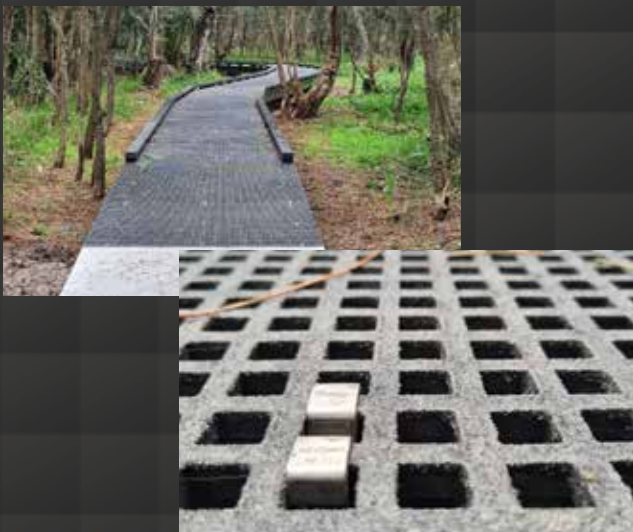
Project Challenges

- This boardwalk would be exposed to the outdoor weather elements as well as be in a damp environment because of its proximity to a lake.
- The surface had to be anti-slip to ensure safety for the user.
- Corrosion resistance and minimal maintenance were key considerations.

PROJECT INFORMATION

Project Category:	Recreational Public Infrastructure
Scope of Work:	Supply FRP grating and structural profiles
Treadwell Products:	EnviroTREAD™ ACCESS SYSTEMS GratEX® FRP Mini Mesh Grating ArchitEX™ FRP Structural Profiles Related grating clips

Treadwell Solution:



1

As part of the Treadwell EnviroTREAD™ range, ArchitEX™ FRP structural profiles were used to provide a long-lasting foundation, and GratEX® FRP Mini Mesh grating was used for the decking.

2

Treadwell FRP grating features a grit surface that offers excellent anti-slip properties.

3

GratEX® FRP Mini Mesh grating and ArchitEX™ FRP structural profiles are constructed from premium resin systems that include corrosion resistant properties, UV inhibitors and a fire-retardant formula, making it ideal for this outdoor application.

4

FRP is simply fabricated and modified on site. This means there is no need for any hot works permit.

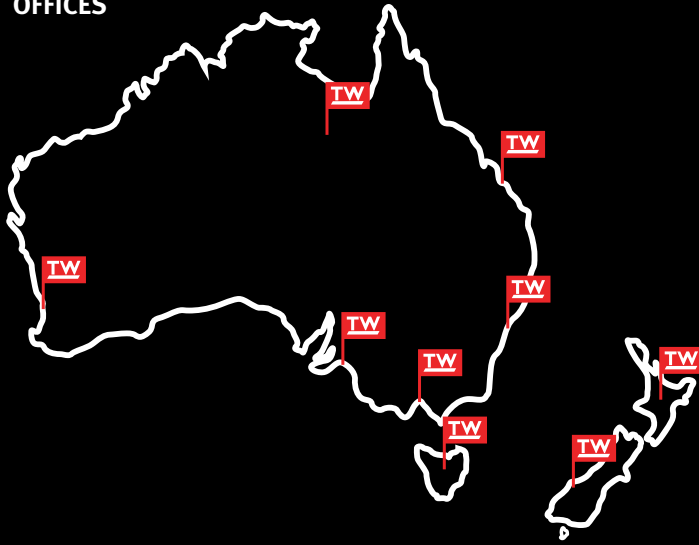
5

Being lightweight and easy to install, FRP is very manageable during construction.

6

Given the nature of FRP, any system utilising it is virtually maintenance free, keeping maintenance costs to a minimum.

OFFICES



ABOUT TREADWELL

At Treadwell Group, our core business divisions have been developed utilising the latest fibreglass reinforced plastic (FRP) technology. With constant innovation and evolution of our offerings, we grow in competence with each experience in delivering unparalleled solutions to a diversified index of industries which include the water and wastewater, mining, oil and gas, public infrastructure, marine sectors. The progression of our products has been focused on ensuring extended design life in varied applications, enabling us to support our continuing commitment to satisfy and add value to our client's endeavours.

Australia

SOUTH AUSTRALIA

▶ **ADELAIDE (HEAD OFFICE & WAREHOUSE)**

58 DEEDS ROAD
NORTH PLYMPTON, SA 5037

▶ **STRATHALBYN (FACTORY & WAREHOUSE)**

22 DUNREATH ROAD
STRATHALBYN, SA 5255

VICTORIA

▶ **MELBOURNE (BRANCH OFFICE & WAREHOUSE)**

1/38-40 AYLESBURY DRIVE,
ALTONA, VIC 3018

NEW SOUTH WALES

▶ **SYDNEY (SERVICED OFFICE)**

LEVEL 6, 10 HERB ELLIOT AVENUE
SYDNEY OLYMPIC PARK, NSW 2127

▶ **WAGGA (REGIONAL OFFICE)**

BALL PL
EAST WAGGA WAGGA, NSW 2650

NEW SOUTH WALES

▶ **SYDNEY (DISTRIBUTION CENTRE)**

2 COAL PIER ROAD
BANKSMEADOW, NSW 2109

QUEENSLAND

▶ **BRISBANE (BRANCH OFFICE & WAREHOUSE)**

LOT 3, 6 GOODMAN PLACE
MURRARI, QLD 4172

WESTERN AUSTRALIA

▶ **PERTH (BRANCH OFFICE & WAREHOUSE)**

4 ELMSFIELD ROAD
MIDVALE, WA 6056

TASMANIA

▶ **BURNIE (DISTRIBUTION CENTRE)**

8 RIVER ROAD
WIVENHOE, TAS 7320

New Zealand

NORTH ISLAND

▶ **AUCKLAND (BRANCH OFFICE & WAREHOUSE)**

110B CRYERS ROAD
EAST TAMAKI, AUCKLAND 1061

Australia

P 1800 246 800

sales@treadwellgroup.com.au

F 1300 763 521

treadwellgroup.com.au

New Zealand

P 0800 246 600

sales@treadwellgroup.co.nz

F 0800 244 600

treadwellgroup.co.nz